

NOVA WALL SYSTEM

Wood grain

Marble series

Solid color

Cloth pattern

Metal



NOVA WALL SYSTEM

What are Bamboo-Polymer Crystal Wall Panels

Bamboo polymer wall cladding panels are innovative building materials that combine the natural properties of bamboo with polymer resin. These panels are typically used to cover walls and facades, providing both aesthetic appeal and functional benefits. Here's a brief description of their characteristics and how they differ from regular wall panels:

- 1. Composition:** Bamboo polymer wall cladding panels are composed of bamboo fibers or particles mixed with polymer resins, such as polyethylene or polypropylene. This combination results in a material that is both durable and environmentally friendly.
- 2. Strength and Durability:** Bamboo fibers add strength to the panels, making them durable and capable of withstanding various weather conditions, including moisture, UV exposure, and temperature fluctuations. This durability ensures longevity and reduces maintenance requirements compared to traditional materials.
- 3. Sustainability:** Bamboo is a fast-growing and renewable resource, making bamboo polymer panels a sustainable choice for environmentally conscious consumers. These panels offer an alternative to traditional wood or plastic-based materials, helping to reduce reliance on finite resources.
- 4. Aesthetic Appeal:** Bamboo polymer panels often mimic the look of natural wood, providing a warm and organic aesthetic to indoor and outdoor spaces. They are available in a variety of colors, textures, and finishes, allowing for customization to suit different design preferences and architectural styles.
- 5. Ease of Installation:** Bamboo polymer panels are typically lightweight and easy to install, making them suitable for both DIY enthusiasts and professional contractors. They may come in interlocking or tongue-and-groove designs for seamless installation and a clean finish.
- 6. Maintenance:** Compared to traditional wood panels, bamboo polymer panels require minimal maintenance. They are resistant to rot, decay, and insect damage, eliminating the need for regular staining, sealing, or painting. Occasional cleaning with mild soap and water is usually sufficient to keep them looking their best.

In summary, bamboo polymer wall cladding panels offer a sustainable, durable, and aesthetically pleasing alternative to traditional wall panel materials. Their unique combination of bamboo fibers and polymer resins provides strength, versatility, and environmental benefits that set them apart from other options in the market.

NOVA WALL SYSTEM

Benefits Of Bamboo-Polymer Crystal Wall Panels



Contemporary Design

Bamboo Polymer Crystal wall panels is ideal for a wide range of uses, especially for interior decoration. With a Variety of Colours and Patterns, residential or commercial buildings.



Thermal Insulation

Bamboo Polymer Crystal wall panels provides excellent Insulation against external heat sources, preserving the Comfort of your living space.



Environment Friendly

Bamboo Polymer Crystal wall panels consists of Natural bamboo, wood and Crystal Powders. It is Formaldehyde-free and VOC-free, thus it is not only safe to the workers but also safe for owners who live inside.



Termite Resistant

Bamboo Polymer Crystal wall panels provides great Peace of mind by keeping your dream home to yourself only, without the worrying problems caused by the Pest inhabitants.



Acoustic Insulation

Bamboo Polymer Crystal wall panels has a reflecting surface that causes Diffuse Reflection, in which the acoustical waves are spread out to different directions when reflected. It buffers the sound energy and therefore is able to Reduce Noise vibrations.



Fire Retardant

Bamboo Polymer Crystal wall panels Reduces the Flammability and Delays the Combustion thus protecting life and homes from Fire Disasters.



Minimal Maintenance

Bamboo Polymer Crystal Panel is very Durable and it's designed to Lasts at least 20-30 years. And we promise to give a 10 years warranty on the panel itself.



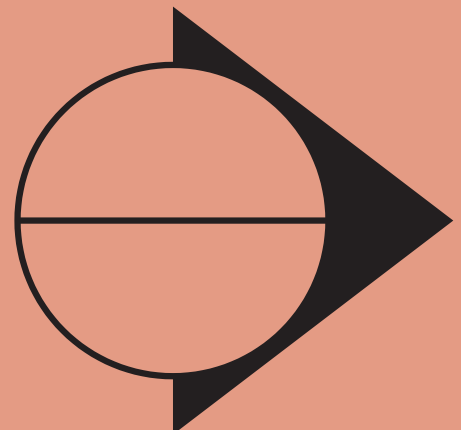
Fast Installation

Bamboo Polymer Crystal Panel is designed to Speed up the Renovation Process. The panels can be Install Directly onto the bare wall using Structural Sealants and use of Aluminium profiles.



Water proof

Bamboo Polymer Crystal wall panels is Waterproof and Resistant to mould and mildew.





TRIM PANEL



Name: Nova wall panel

Material: Polymer Bamboo crystal - charcoal / Bamboo wood

Width and length:

1220*2 440/2600/2800/3000(mm)

1220*Custom length(mm)

Thickness: 5mm & 8mm

Environmental protection grade:ENF

Performance:waterproof & bendable

PHYSICAL PHOTOS



Waterproof



Insect
Prevention



Environmental
Protection



Flame-
retardant



Thickness: 5mm&8mm



Bending and shaping



Waterproof and moisture-proof

1. Putty and leveling
2. Apply structural adhesive and Double-sided tape on the back
3. Install wall panels on the wall
4. Metal profile connection
(If the wall is flat, skip the first step)

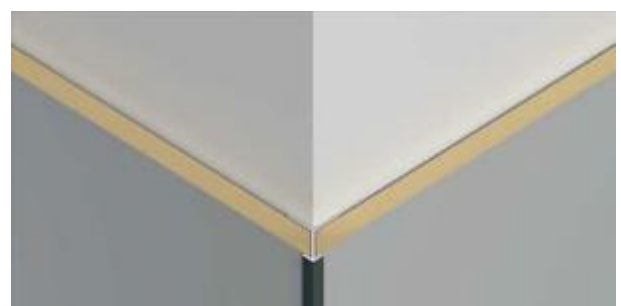


Effect of PVC wall panel slotting to wrap columns



Corner slotting and bending

1. Slotting of trimming machine
2. Hot air gun heating bending
3. Apply structural adhesive on the back of the wall panel



Metal profile connections can also be used at corners

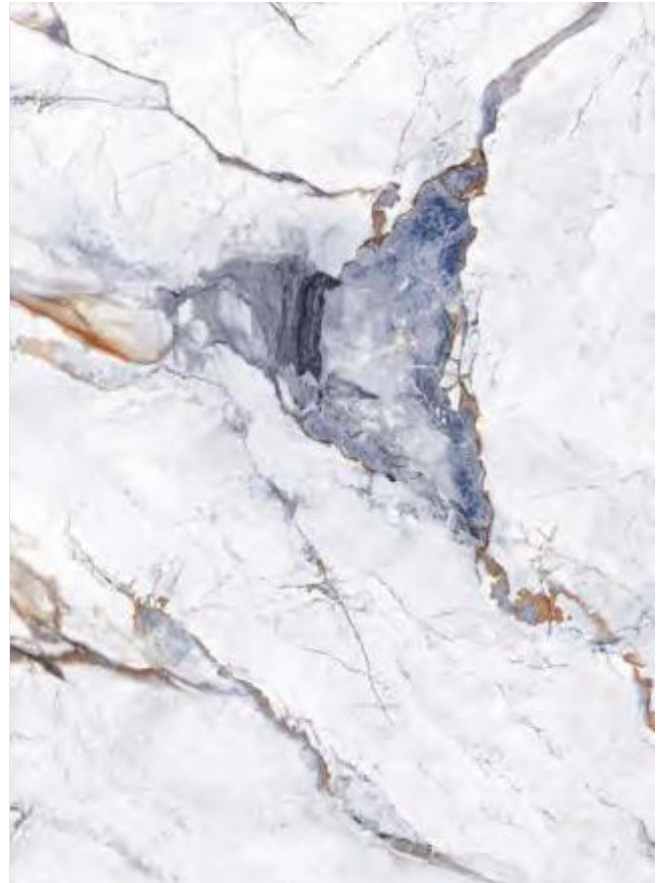


COLOUR - Marble series

8056-1A



8056-1B





COLOUR - Marble series

8045-A



8045-B



lightbox
polymers

architectural surface materialists.

NOVA WALL SYSTEM



COLOUR - Marble series

8038-A



8038-B





COLOUR - Marble series

8041-A



8041-B





COLOUR - Marble series

8037





COLOUR - Marble series

8053-2A



8053-2B





COLOUR - Marble series

8053- A



8053-1B





COLOUR - Marble series

8047-A



8047-B



lightbox
polymers

architectural surface materialists.

NOVA WALL SYSTEM



8224

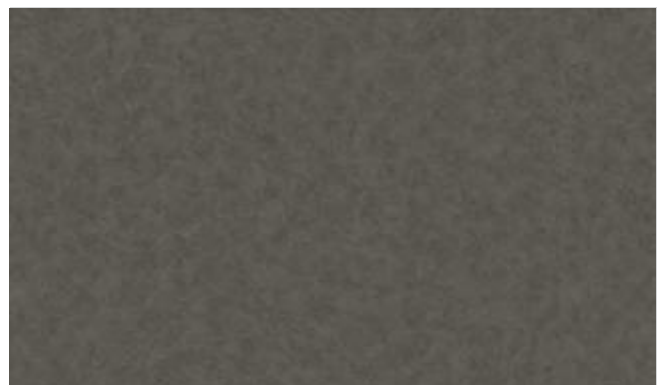
COLOUR - Marble series



KB-8224-Y25



KB-8224-Y25-2



KB-8224-Y25-1



COLOUR - Marble series

KB-8039



lightbox
polymers

architectural surface materialists.

NOVA WALL SYSTEM



COLOUR - Marble series

KB-8035



lightbox
polymers

architectural surface materialists.



8025

COLOUR - Marble series

8025



8025-1



lightbox
polymers

architectural surface materialists.

NOVA WALL SYSTEM



8024

COLOUR- Marble Series



8024



8024-2



8024-1



8024-4



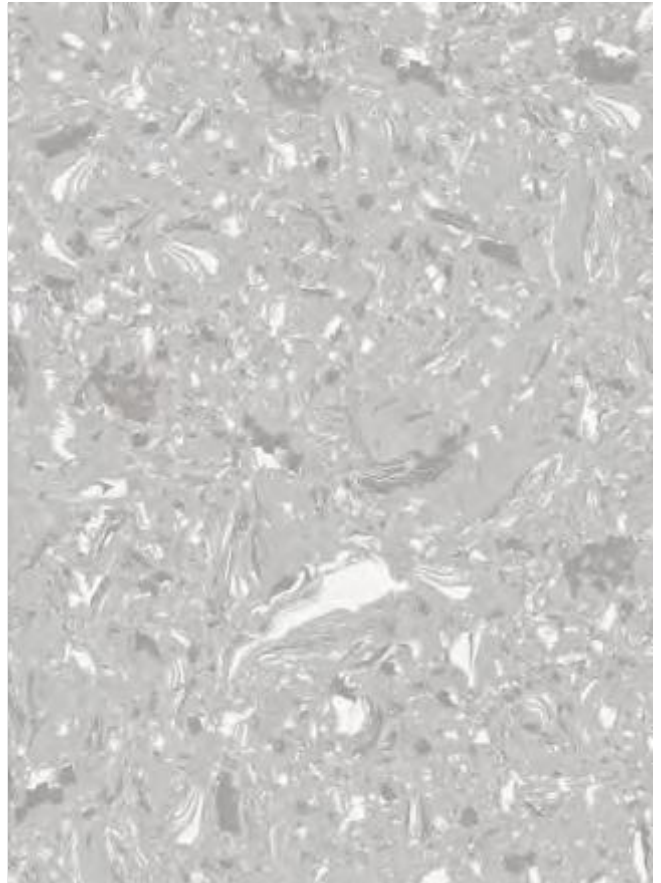
8022

COLOUR - Marble series

8022



8022-1





8021

COLOUR-Marble Series



8021



8021-2



8021-1



8021-4

lightbox
polymers

architectural surface materialists.



COLOUR - Marble series

8020



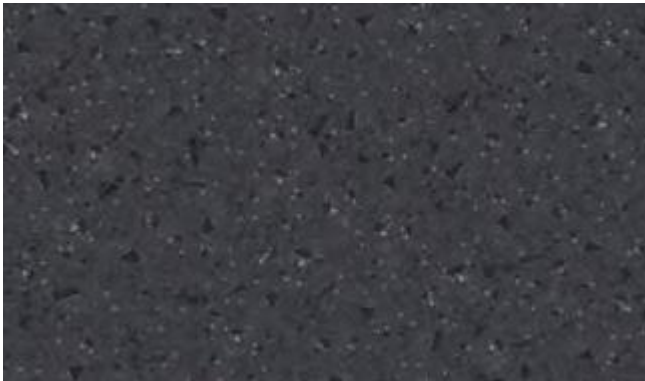
lightbox
polymers

architectural surface materialists.

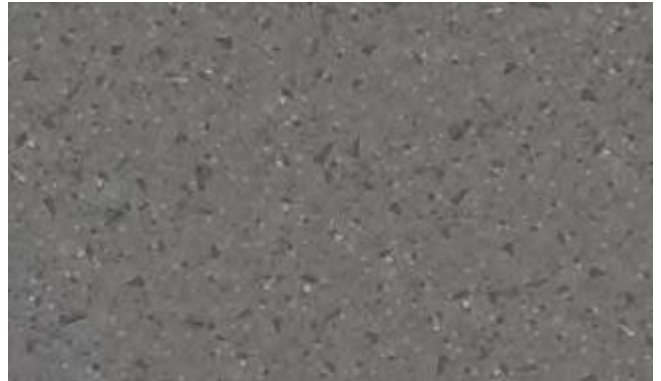


8019

COLOUR-Marble Series



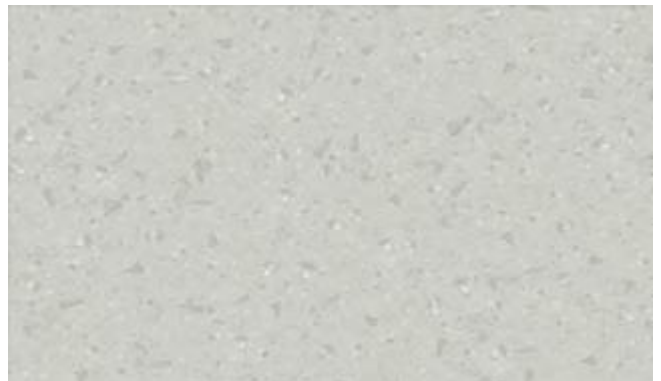
8019



8019-3



8019-1



8019-4

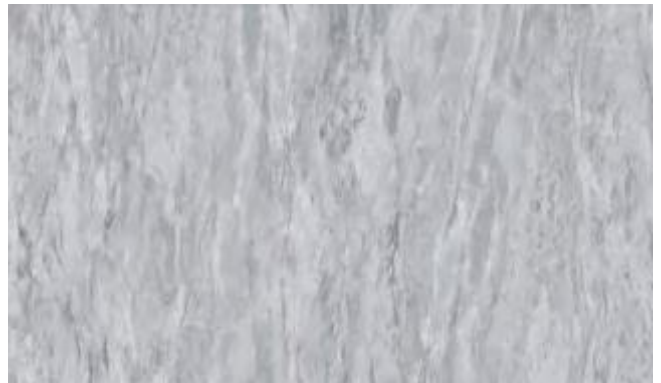


8018

COLOUR-Marble Series



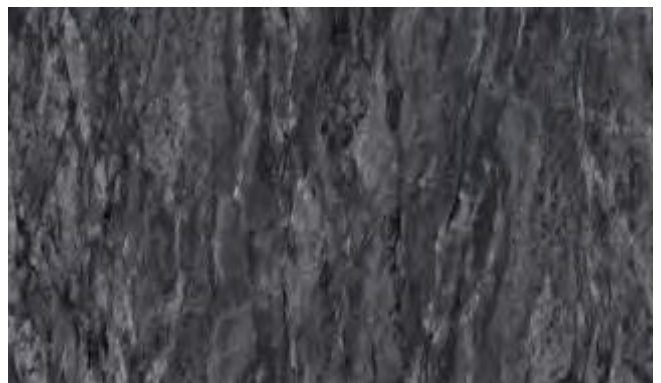
8018



8018-3



8018-1



8018-4

lightbox
polymers

architectural surface materialists.

NOVA WALL SYSTEM



8017

COLOUR-Marble Series



8017



8017-2



8017-1



8017-3



COLOUR-Marble Series

8016



8016-1



8016-3



8016-2



8016-4



8015

COLOUR - Marble series



8015



8015-1



8015-2



8014

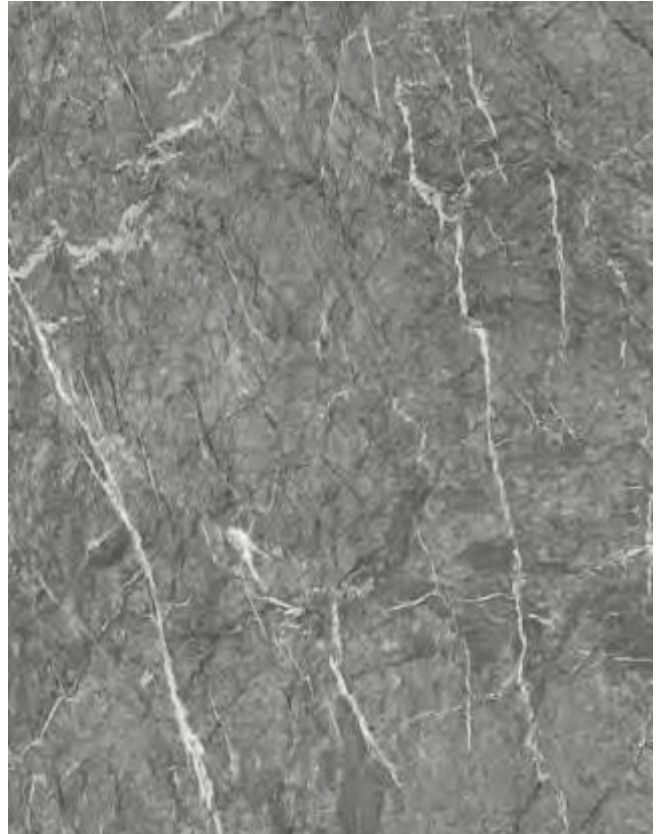
COLOUR - Marble series



8014



8014-1

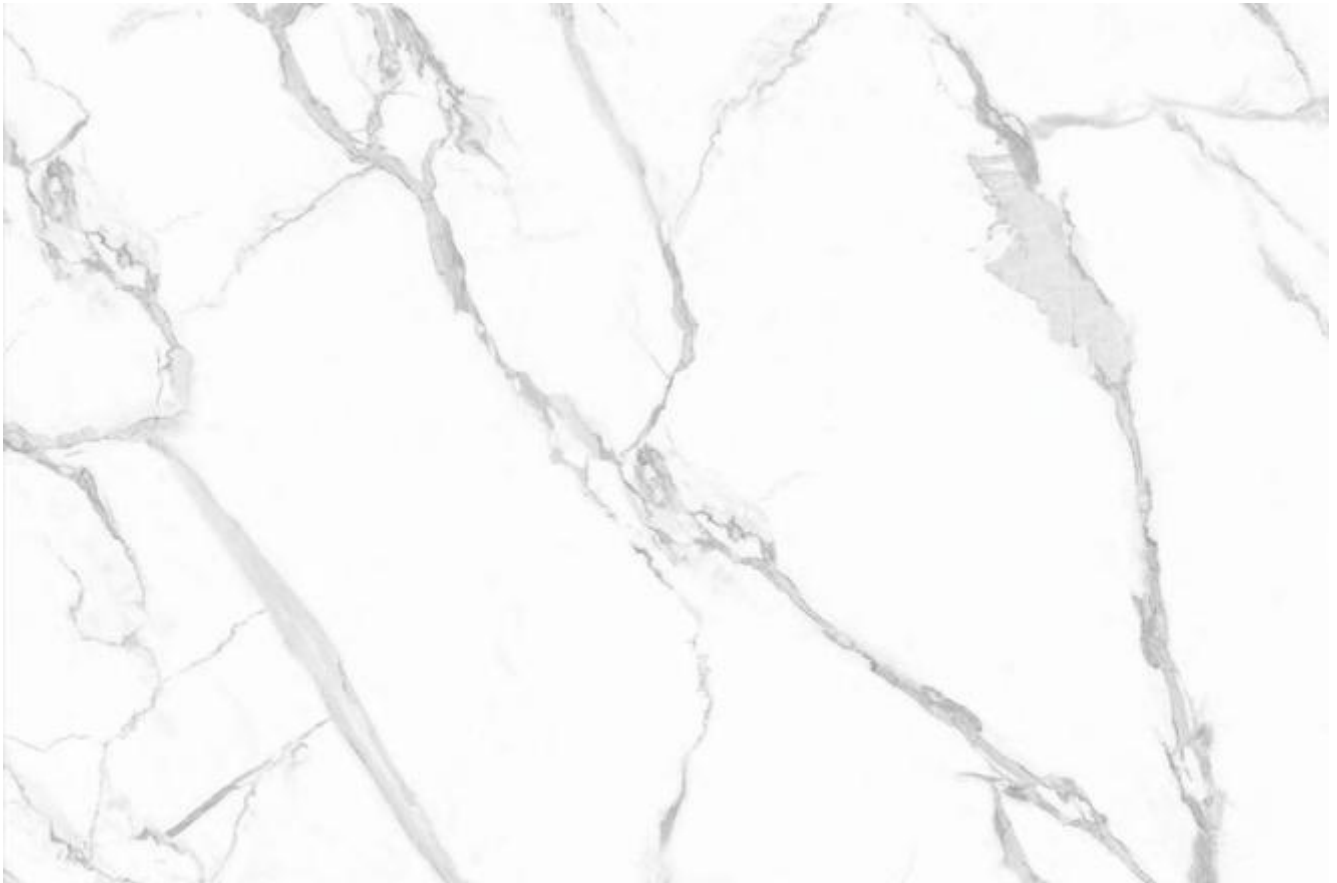


8014-2



8013

COLOUR - Marble series



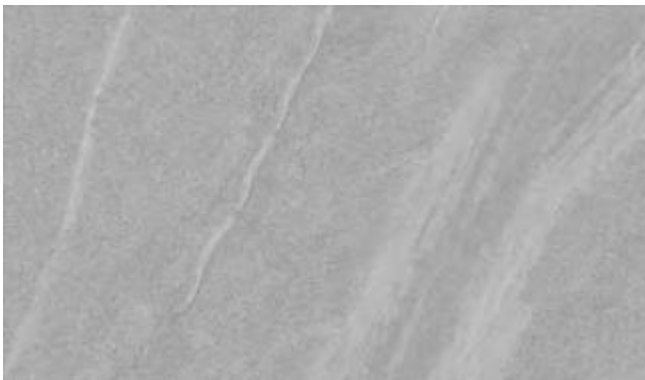
lightbox
polymers

architectural surface materialists.



8012

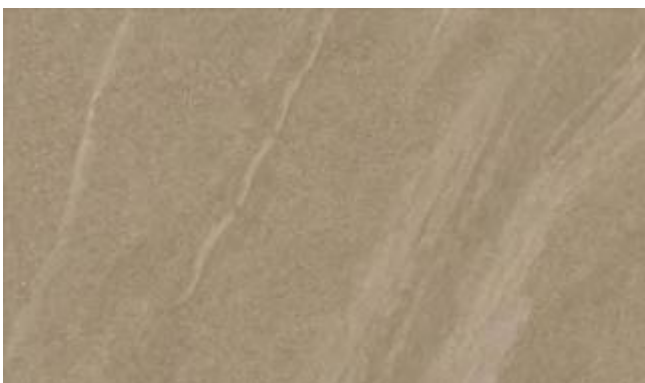
COLOUR-Marble Series



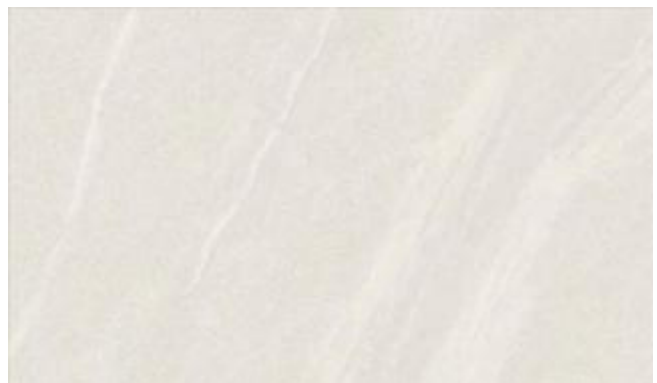
8012



8 0 12-2



8012-1



8012-3



8011

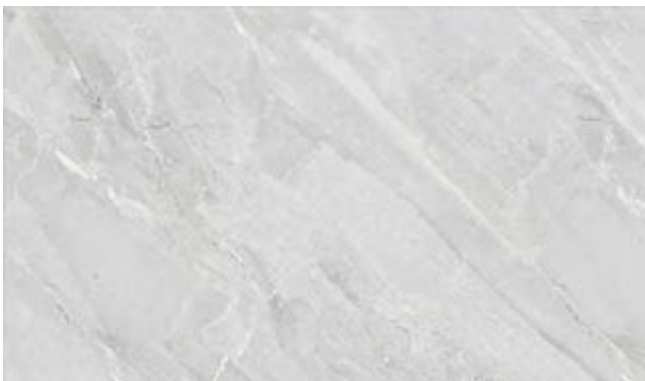
COLOUR-Marble Series



8011



8011-2



8011-1



8011-3

lightbox
polymers

architectural surface materialists.

NOVA WALL SYSTEM



8010

COLOUR - Marble series

8010



8010-1



lightbox
polymers

architectural surface materialists.

NOVA WALL SYSTEM



8009

COLOUR - Marble series



8009



8009-1



8009-2

lightbox
polymers

architectural surface materialists.

NOVA WALL SYSTEM



8008

COLOUR - Marble series



8008



8008-1



8008-2

lightbox
polymers

architectural surface materialists.

NOVA WALL SYSTEM



8007

COLOUR - Marble series

8007-2



8007-3



architectural surface materialists.



8006

COLOUR - Marble series

8006



8006-1





8005

COLOUR - Marble series



8005



8005-1

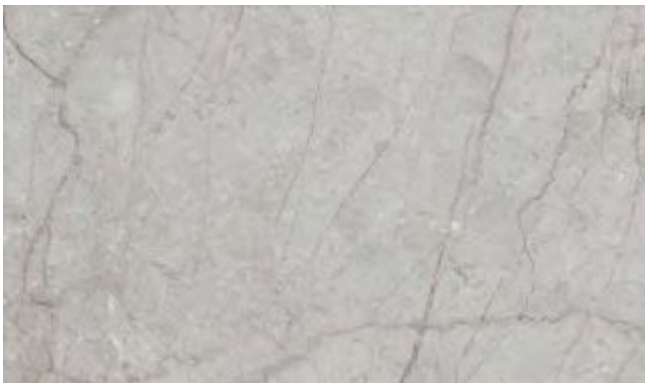


8005-2



8004

COLOUR - Marble series



8004



8004-1



8004-2



8003

COLOUR-Marble Series



8003



8003-2



8003-1



8003-3



8002

COLOUR-Marble Series



8002



8002-1



8002-2

lightbox
polymers

architectural surface materialists.

NOVA WALL SYSTEM

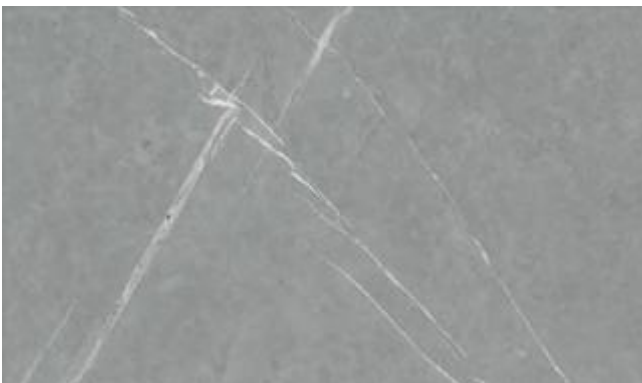


8001

COLOUR-Marble Series



8001-1



8001-2



8001-3

lightbox
polymers

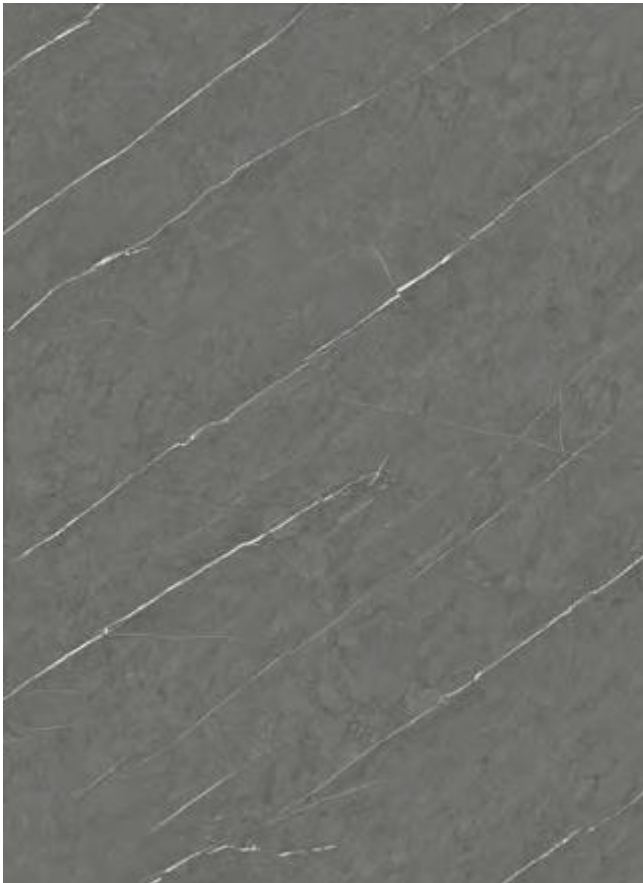
architectural surface materialists.



YSB-3701

COLOUR - Marble series

YSB3701



KB3701-1



COLOUR-Mirror series

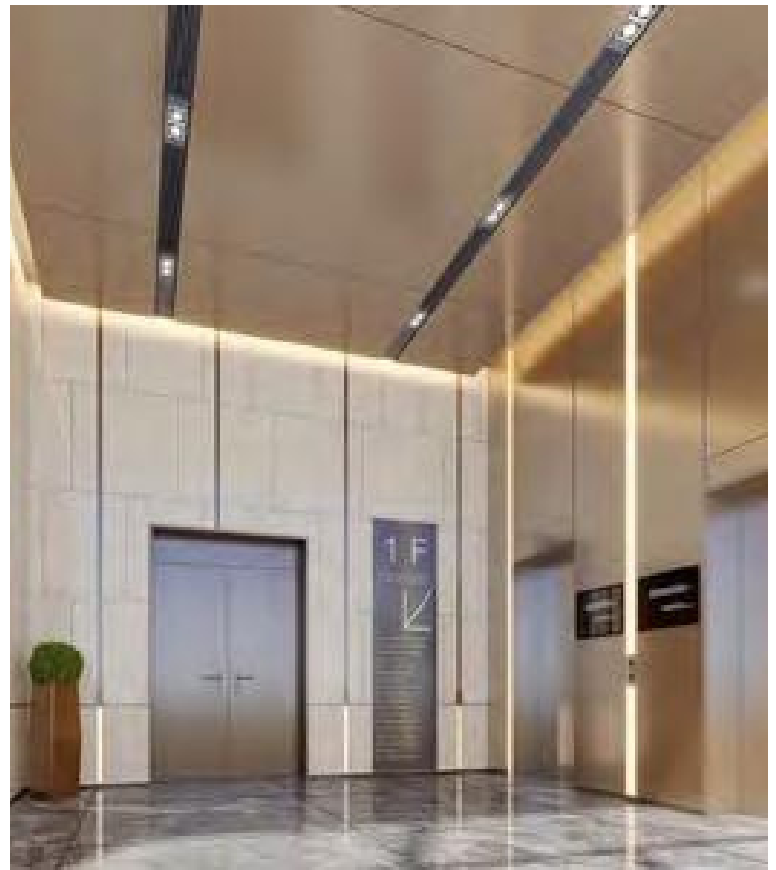
NOVA WALL SYSTEM





COLOUR - Metal series

NOVA WALL SYSTEM

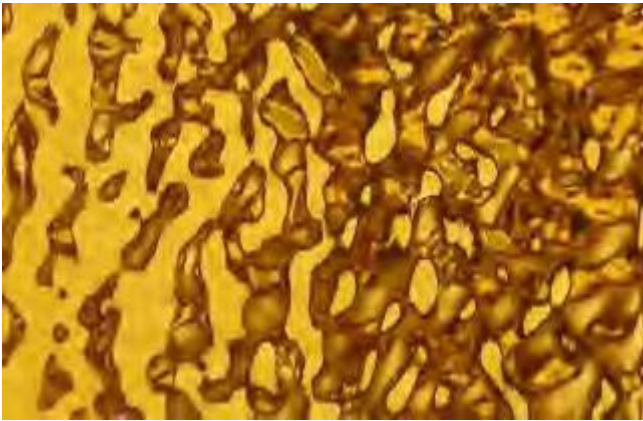




lightbox
polymers
architectural surface materialists.



SILVER



GOLDEN



ROSE GOLD



BLUE



BLACK



PET Metal 01



PET Metal 02



PET Metal 03



PET Metal 05



PET Metal 04



PET Mosaic Silver



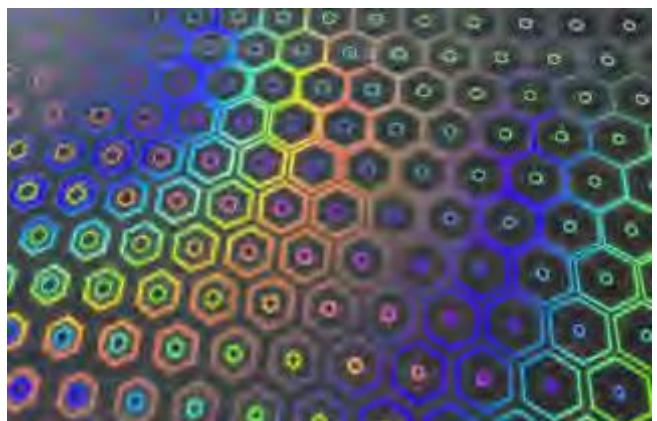
PET Mosaic Golden



PET Mosaic Rose



PET Mosaic Grey



PET Laser



LS1001



LS1002



LS1003



LS1009



LS1010



LS1004



LS1005



LS1006



LS1007



LS1008



COLOUR - Wood grain series





LS9041



LS9042



LS9043



LS9044



LS9045



LS9046



LS9047



LS9048



LS9049



LS9001



LS9002



LS9003



LS9005



LS9006



LS9007



LS9010



LS9011



LS9012



LS9014



LS9015



LS9016



LS9017



LS9018



LS9019



LS9025



LS9029



LS9030



LS9035



LS9036



LS9021



LS9022



LS9037

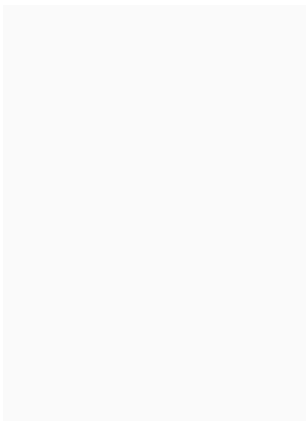


LS9038

COLOUR - Solid color series

NOVA WALL SYSTEM

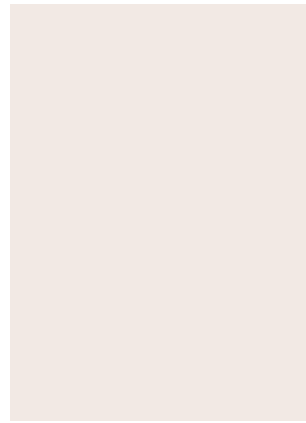




LS7019



LS7001



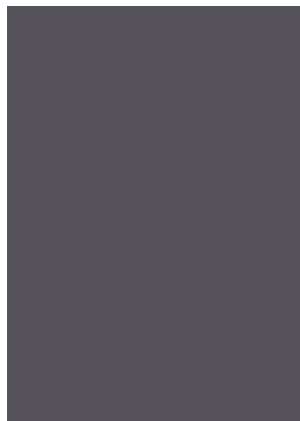
LS7002



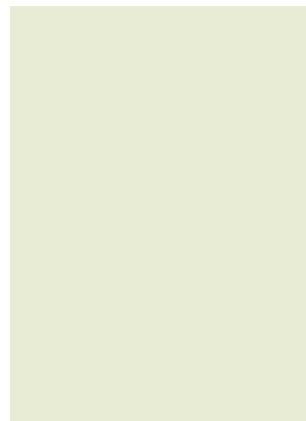
LS7005



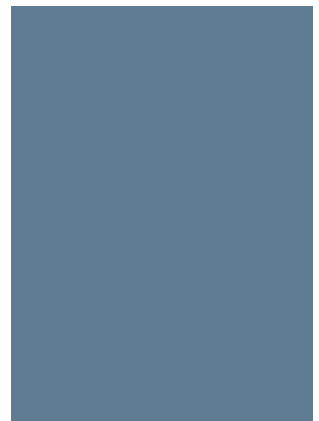
LS7006



LS7007



LS7003



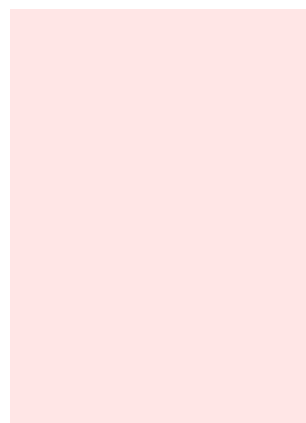
LS7016



LS7009



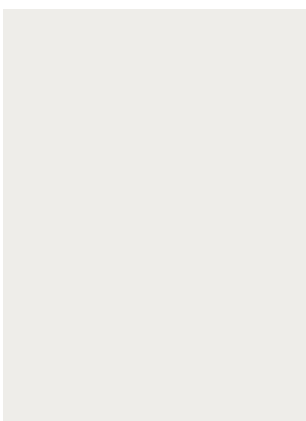
LS7010



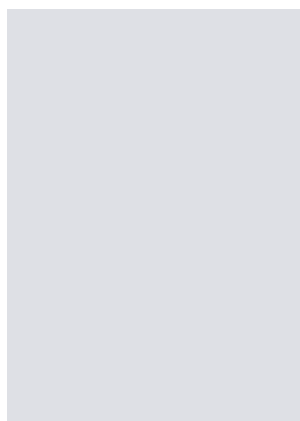
LS7015



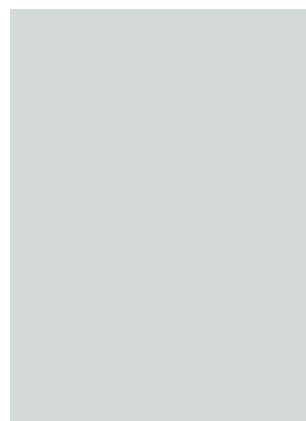
LS7017



LS7012



LS7011



LS7018



LS7013

Luxury Stone - Warm Tones

NOVA WALL SYSTEM





LS8001



LS8002



LS8003



LS8004



LS8007



LS8008



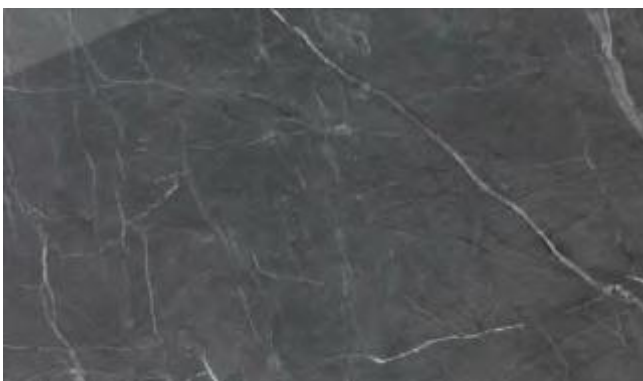
COLOUR-Marble Series



LS5001



LS5002



LS5003



LS5004



COLOUR - Stone series



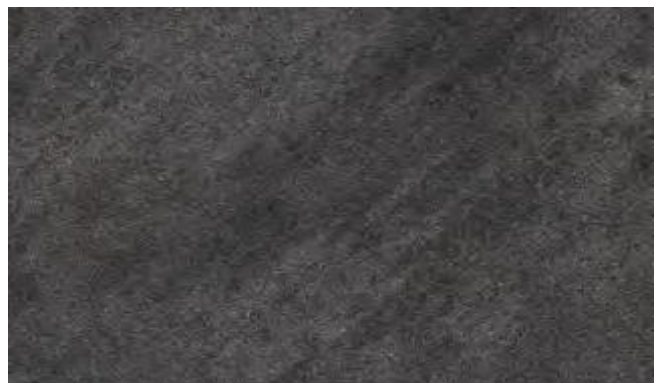
LS6001



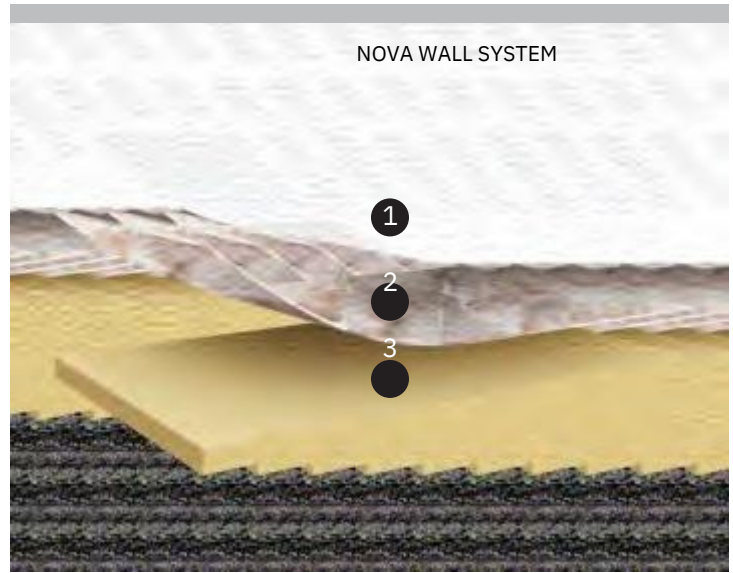
LS6002



LS6003



LS6004



1. PET layer
2. 3D inkjet layer
3. Bamboo Polymer wood/bamboo charcoal substrate



Real-time waterproof



Live bending

Name: 3D background wall

Length and width:
2440*1220mm/1220*3000mm
Single piece size within 1200 * 3000mm can be customized

Thickness: 8mm
Surface process: bright or matte
Environmental protection grade: ENF
Fire rating: B1

Texture left and right infinite connection



Bending installation process





FLUTED WALL PANEL

The wooden grid based on nano bamboo and wood fiber replaces the traditional wooden grid, which is more environmental friendly, moisture-proof and does not deform.

The traditional wooden grid will be moldy and deformed after it is used for a long time. The cost is very high and is not environmental friendly.

Now, the advantages of using nano bamboo and wood fiber material are: environmental protection, waterproof, moisture-proof, mildew proof, moth proof, no deformation, various colors, light, installed, clean, firm, durable and nice appearance.

It is very popular by lots of customers as soon as it accesses to the domestic and overseas market!



Waterproof



Insect prevention



Environmental protection



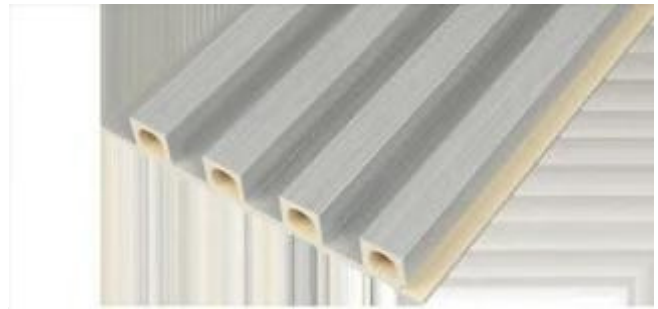
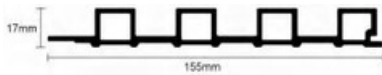
Flame-retardant

HOLLOW GRID PLATE

NOVA WALL SYSTEM



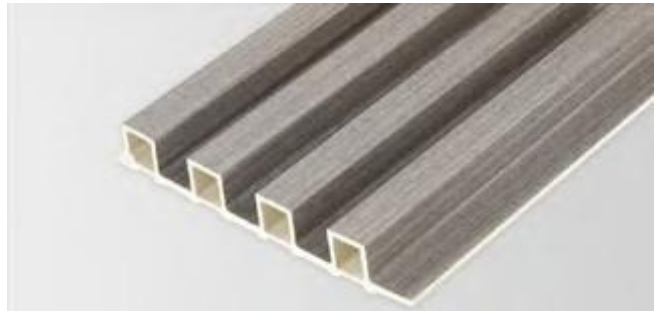
Name: 155*17 Hollow fluted wall panel



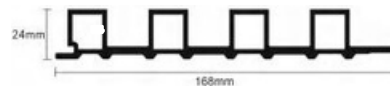
Name: 158*17 circular hole wall panel



Name: 170*18 Hollow fluted wall panel



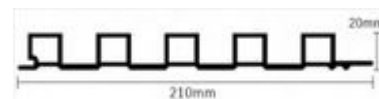
Name: 168*24 Hollow fluted wall panel



Name: 170*18 Six Groove Wall Panel



Name: 210*20 Hollow fluted wall panel





Fluted wall panel

Installation effect



HOLLOW GRID PLATE

NOVA WALL SYSTEM



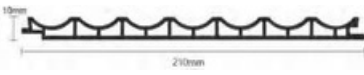
Name: 158*15 Arc fluted wall panel



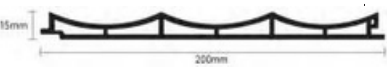
Name: 159*15 Inner arc wall panel



Name: 200*10 Inner arc wall panel



Name: 200*15 Wave fluted wall panel

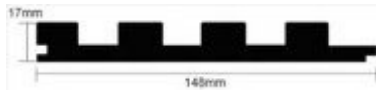


SOLID GRID PLATE

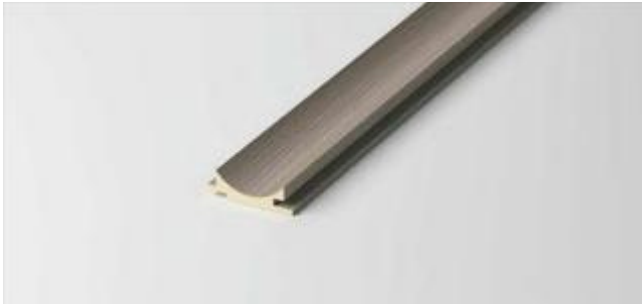
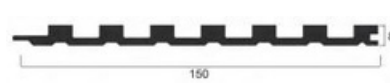
NOVA WALL SYSTEM



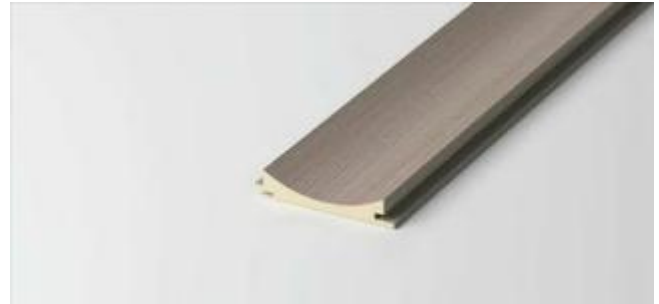
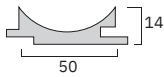
Name: 148*17 Solid wood wall panel



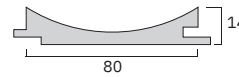
Name: 150*8 Solid fluted wall panel

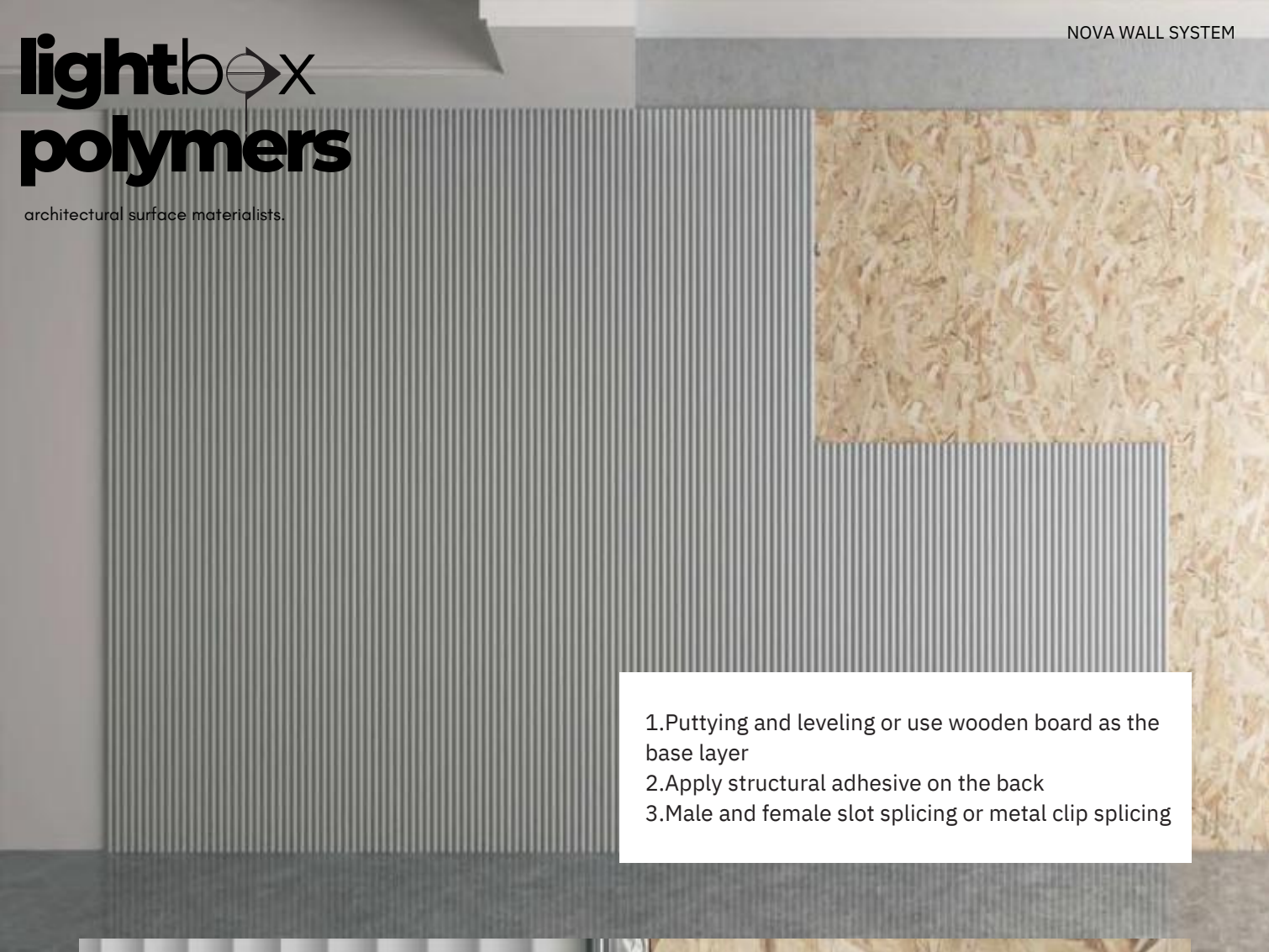



Name: 50 Inner arc solid grille



Name: 80 Inner arc solid grille



- 
1. Puttying and leveling or use wooden board as the base layer
 2. Apply structural adhesive on the back
 3. Male and female slot splicing or metal clip splicing

- 
1. Puttying and leveling
 2. Apply structural adhesive on the back
 3. Male and female slot splicing or metal clip splicing

COLOUR - Wood grain series

NOVA WALL SYSTEM



lightbox
polymers
architectural surface materialists.



lightbox
polymers

architectural surface materialists.

NOVA WALL SYSTEM

Aluminum alloy wallboard profile

5/8 mm

NOVA WALL SYSTEM

Wall Panel Aluminum Alloy Fitting

Model name	Product Photo	Sectional View	Installation Drawing	Length (M/Piece)	color	WeightPacking (KG/Piece)	Price (PCS/CTN)	(\$/Piece)
Outside the line				3m	black golden silvery rose		100PCS	
Inner corner line				3m	black golden silvery rose		100PCS	
Single line				3m	black golden silvery rose		200PCS	
Binding off line				3m	black golden silvery rose		200PCS	
Duplex line				3m	black golden silvery rose		100PCS	
Duplex light band				3m	black golden silvery rose		100PCS	
Binding off line band				3m	black golden silvery rose		100PCS	
Top line				3m	black golden silvery rose		200PCS	
20*20 L border				3m	black golden silvery rose		200PCS	

lightbox polymers

architectural surface materialists.

NOVA WALL SYSTEM

For Enquiries:

WhatsApp: +91 97318-26270

Email: lightboxpolymers@gmail.com